



Company : Santos

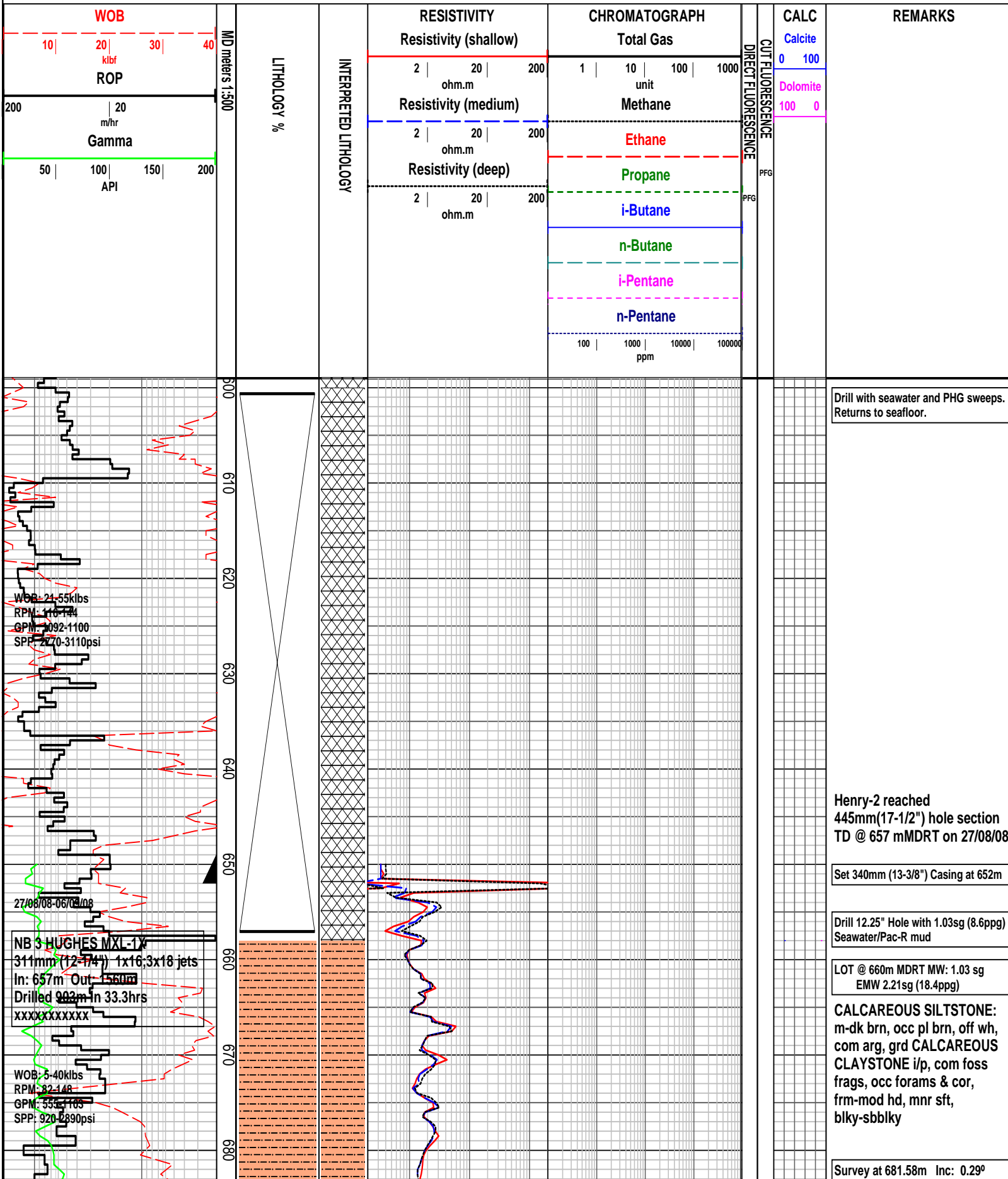
Well : Henry-2

Interval : 600.00 - 1560.00 meters

Created : 08/Sep/2008 9:42:40 PM

INTEQ

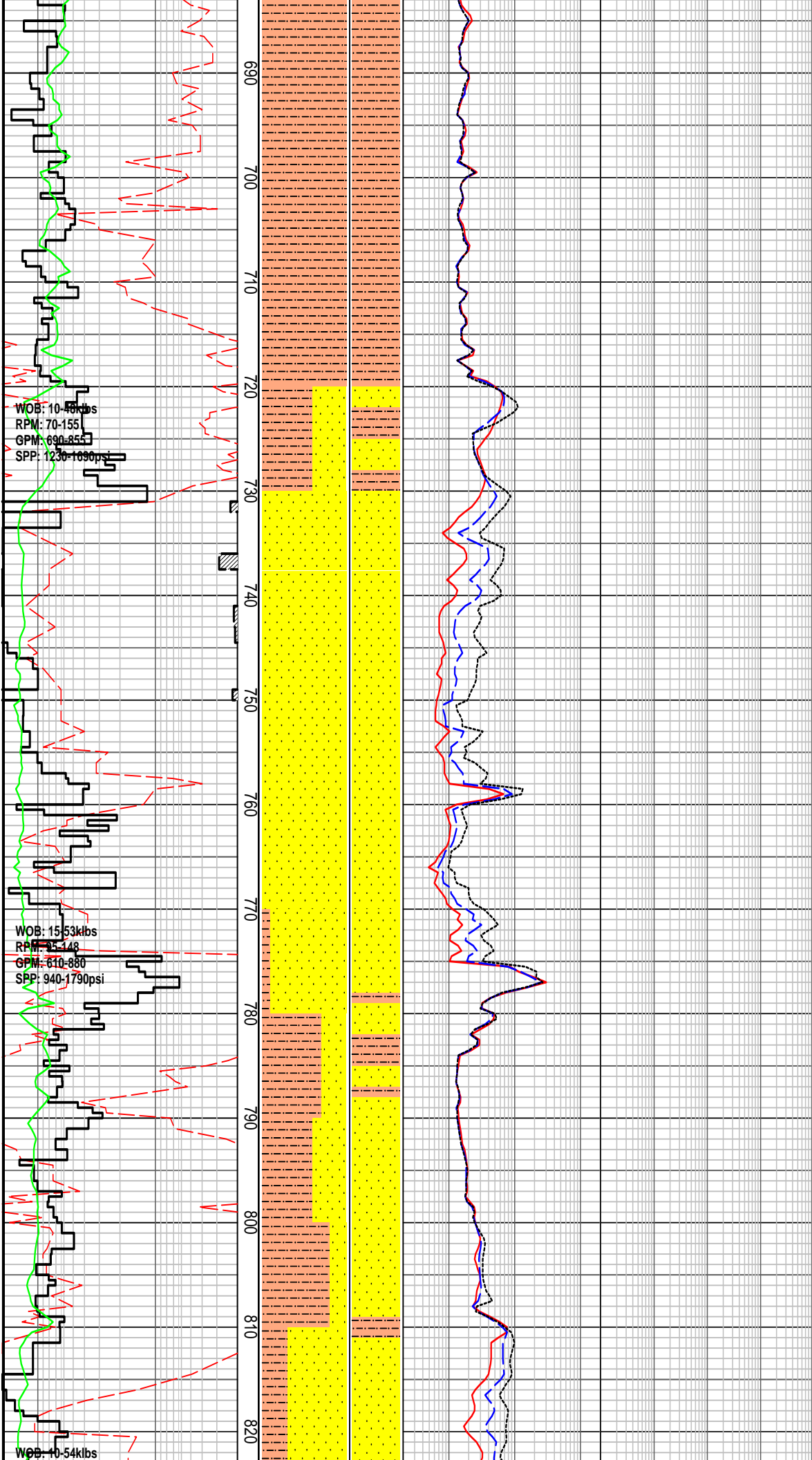
HENRY-2 FORMATION EVALUATION LOG



WOB: 21.55kbs
 RPM: 116.144
 GPM: 1092-1100
 SPP: 270-3110psi

27/08/08-06/08/08
 NB 3 HUGHES MXL-1X
 311mm (12-1/4") 1x16; 3x18 jets
 In: 657m Out: 1560m
 Drilled 902m in 33.3hrs
 XXXXX XXXXXX

WOB: 5.40kbs
 RPM: 82.148
 GPM: 553-1185
 SPP: 920-2890psi



CALCAREOUS SILTSTONE:
 m-dk brn, occ pl brn, off wh, com arg, grd
CALCAREOUS CLAYSTONE i/p, com foss frags, occ forams & cor, frm-mod hd, mnr sft, blk-y-sbblky

SANDSTONE: m-dk or, rr off wh, m-dom v crs, p srt, sbrnd-rndd, wk sil cmt, rr off wh arg mtx, com or Fe stn, lse, mnr fri-mod hd, gd-v gd inf por, no fluor

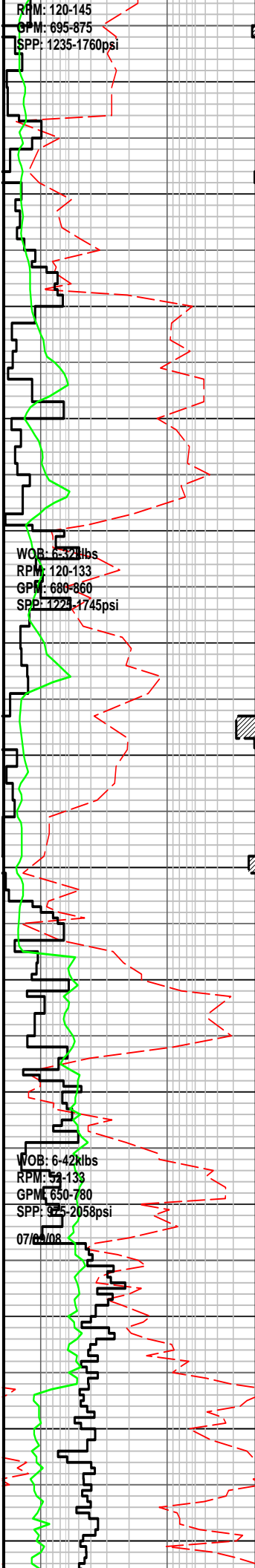
SANDSTONE: m-dk or, rr off wh, m-dom v crs, p srt, sbrnd-rndd, wk sil cmt, rr off wh arg mtrx, com or Fe stn, lse, mnr fri-mod hd, gd-v gd inf por, no fluor

Survey at 768.28m Inc: 0.83°
 Azi: 157.79° TVD: 768.20m

SILTSTONE: pl-m grn, pl gry, gry grn, off wh, arg, mnr glauc gr, rr pyr nods, frm-mod hd, dis i/p, sbblky, mnr amor

MW: 1.19 FV: 75 PV: 21 YP: 31
 GELS: 9/15/21 SOL: 5.22
 pH: 8.5 Ck: 8.5 CL: 66000

SANDSTONE: off wh-pl gry, clr-trnsl, crs-v crs, m i/p, mod srt, sbang-rndd, wk sil cmt, occ off wh arg mtrx occ pyr nods, lse gr, mnr fri, fr-gd inf por, no fluor



SANDSTONE: off wh-pl gry, clr-trnsl, crs-v crs, m i/p, mod srt, sbang-rnidd, wk sil cmt, occ off wh arg mtrx occ pyr nods, lse gr, mnr fri, fr-gd inf por, no fluor

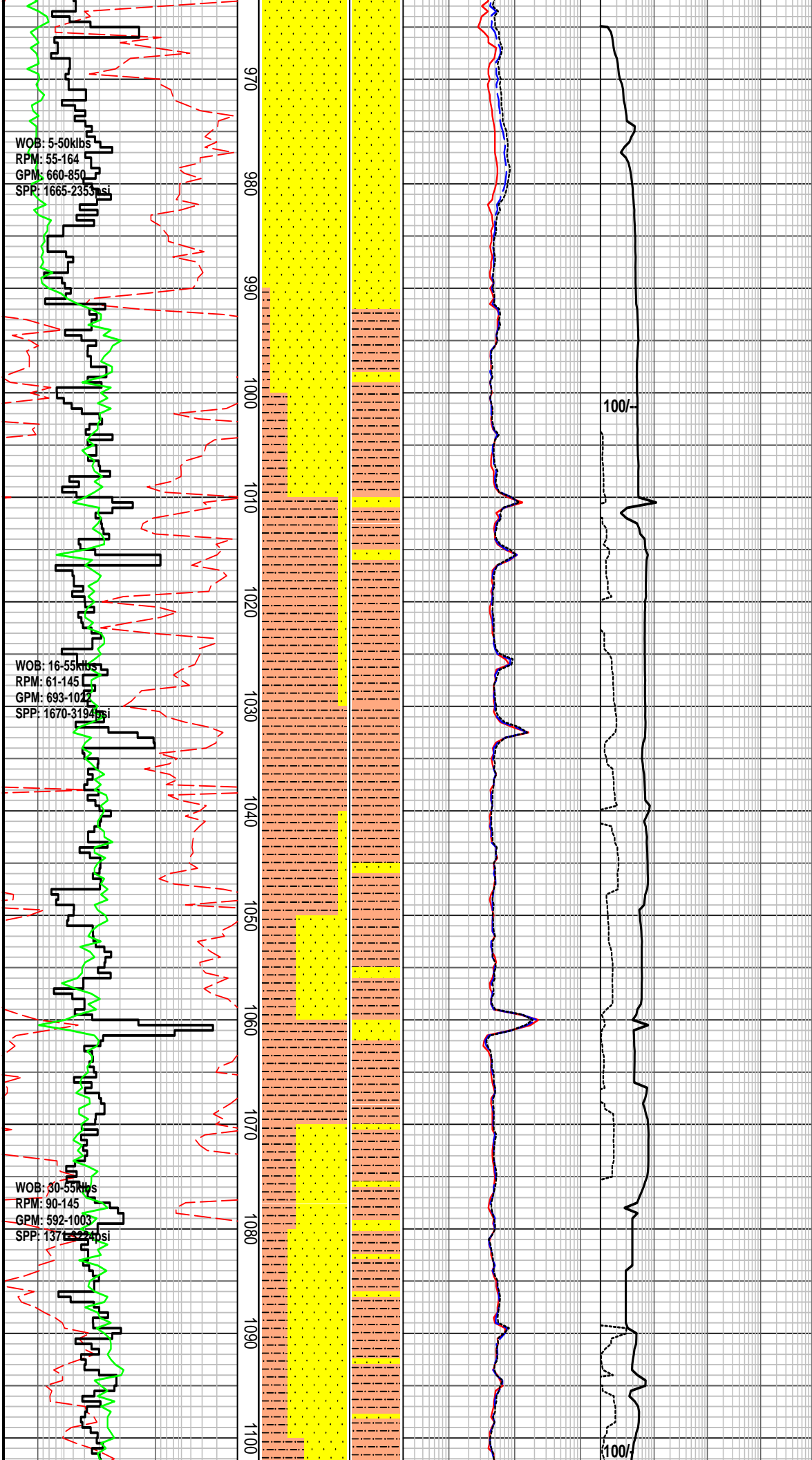
SANDSTONE: off wh-pl gry, clr-trnsl, crs-v crs, m i/p, mod srt, sbang-rnidd, wk sil cmt, occ off wh arg mtrx occ pyr nods, lse gr, mnr fri, fr-gd inf por, no fluor

Survey at 883.67m Inc: 3.87° Azi: 140.62° TVD: 883.50m

SANDSTONE: lt brnsh gry i/p, clr-trnsl, f- crs, p srt, sbang-sbrnidd, nil cmt, rr lt brnsh gry arg mtrx, rr nod pyr, tr mic, tr liths, pred lse qtz gr, gd inf por, no fluor

Displace Hole with 1.19sg (9.9ppg) KCL/Glycol mud

SANDSTONE: lt brnsh gry i/p, clr-trnsl, f- crs, p srt, sbang-sbrnidd, nil cmt, rr lt brnsh gry arg mtrx, rr nod pyr, tr mic, tr liths, pred lse qtz gr, gd inf por, no fluor



SANDSTONE: lt brnsh gry i/p, clr-trnsl, f- crs, p srt, sbang-sbrnidd, nil cmt, rr lt brnsh gry arg mtrx, rr nod pyr, tr mic, tr liths, pred lse qtz gr, gd inf por, no fluor

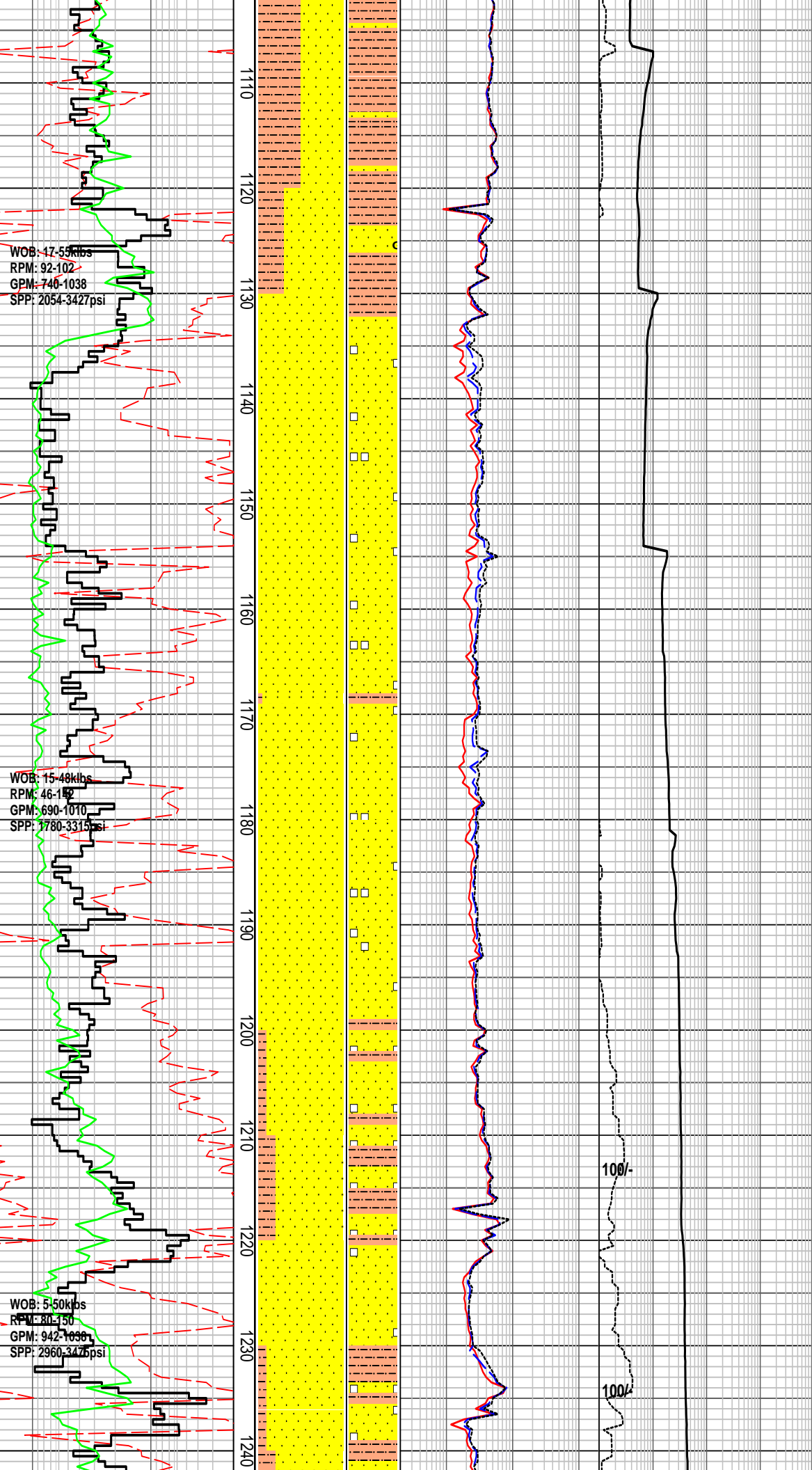
Survey at 998.24m Inc: 13.64°
Azi: 148.11° TVD: 996.9m

SILTSTONE: m brn, m brnsh gry, arg, loc vf aren, tr f carb spks, tr vf glauc, sft frm, disp i/p, sbblky

SILTSTONE: m brn, m brnsh gry, arg, loc vf aren, mnr carb spks, tr vf glauc, sft frm, sbblky

SANDSTONE: off wh, lt brnsh gry, clr-trnsl, f-m gr, tr crs, pr srt, sbang-sbrnidd, mnr wk calc cmt, mnr lt brnsh gry arg mtrx, tr liths, tr carb spks, p-fr inf por, no fluor

Survey at 1112.80m Inc: 24.41°
Azi:135.23° TVD: 1104.9m



WOB: 47-55klbs
RPM: 92-102
GPM: 746-1038
SPP: 2054-3427psi

WOB: 15-48klbs
RPM: 46-182
GPM: 690-1010
SPP: 1780-3315psi

WOB: 5-50klbs
RPM: 80-150
GPM: 942-1036
SPP: 2960-3476psi

SANDSTONE: lt gry, lt brnsh gry, grnsh gry, clr-trnsl, vf-f gr, rr m-crs, sbang-sbrnidd, p srt, rr sil cmt, com nod pyr, tr liths, fri-mod hd vf agg, lse-med crs gr, p inf por, no fluor

SANDSTONE: lt gry, lt brnsh gry, grnsh gry, clr-trnsl, vf-f gr, rr m-crs, sbang-sbrnidd, p srt, rr sil cmt, com nod pyr, tr liths, fri-mod hd vf agg, lse-med crs gr, p inf por, no fluor

SANDSTONE: lt gry, lt brnsh gry, grnsh gry, clr-trnsl, vf-f gr, rr m-crs, sbang-sbrnidd, p srt, rr sil cmt, com nod pyr, tr liths, fri-mod hd vf agg, lse-med crs gr, p inf por, no fluor

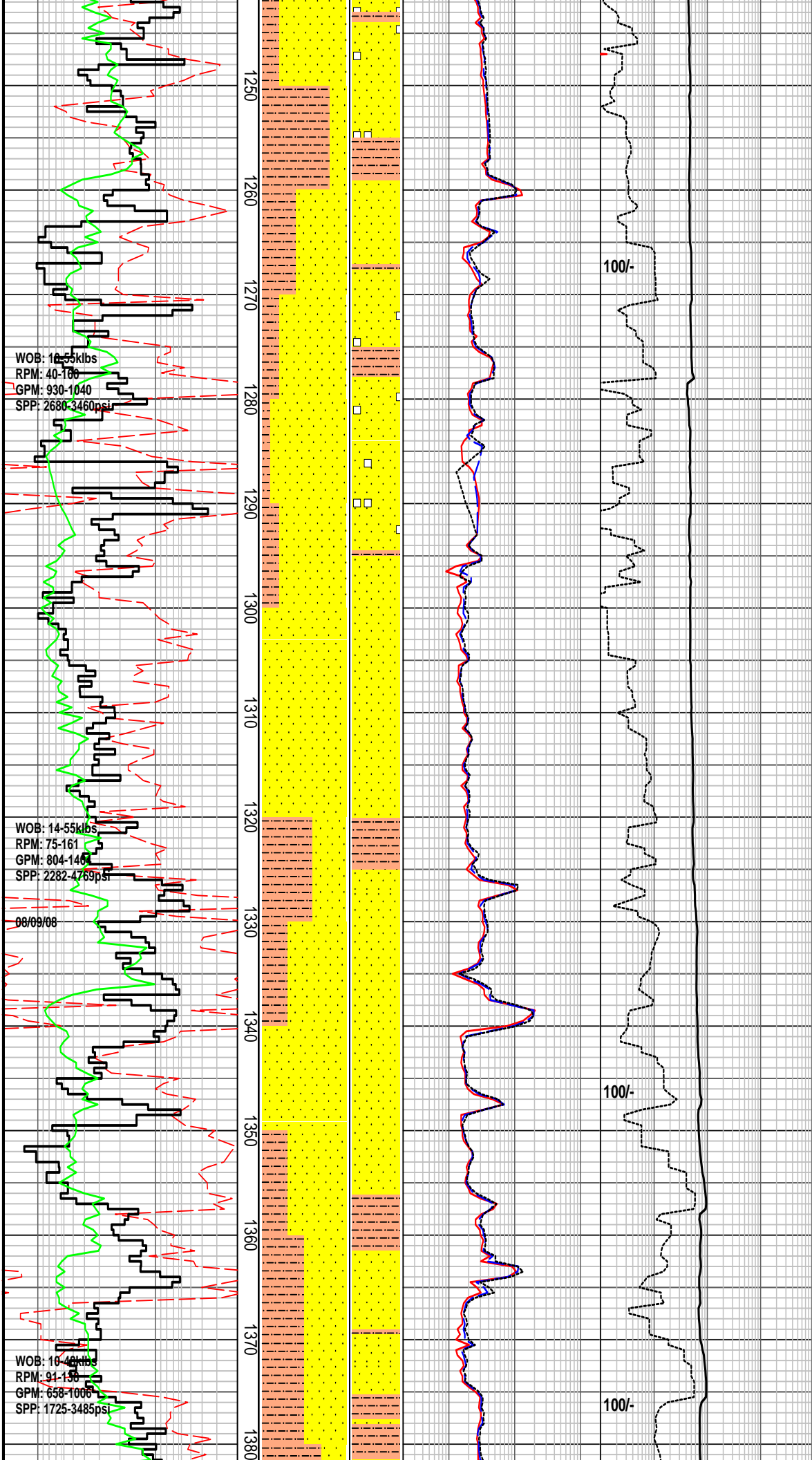
Survey at 1198.94m Inc: 28.27°
Azi:128.23° TVD: 1182.0m

SILTSTONE: m-dk brn gry, arg, mnr lith, disp-v sft, occ frm, amor, occ sbbkly

SANDSTONE: lt gry, lt brnsh gry, grnsh gry, clr-trnsl, vf-f gr, rr m-crs, sbang-sbrnidd, p srt, rr sil cmt, com nod pyr, tr liths, fri-mod hd vf agg, lse-med crs gr, p inf por, no fluor

100/-

100/-



WOB: 10-55kbs
 RPM: 40-176
 GPM: 930-1040
 SPP: 2680-3460psi

WOB: 14-55kbs
 RPM: 75-161
 GPM: 804-146
 SPP: 2282-4769psi

WOB: 10-48kbs
 RPM: 91-156
 GPM: 658-1006
 SPP: 1725-3485psi

08/09/08

SILTSTONE: m-dom dk brn, mnr brn gry, arg i/p, mnr micmic, occ carb spks & frags, v sft-dis, amor, sbbkly i/p

Survey at 1257.97m Inc: 31.15°
 Azi:125.30° TVD: 1233.2m

SANDSTONE: mnr pl brn-pl gry, clr-trnsl, f-m, mnr crs, mod srt, sbang-sbrndd, wk sil cmt, mnr off wh arg mtrx, com pyr nods, lse cln gr, mnr fri, fr inf por, p vis por, no fluor

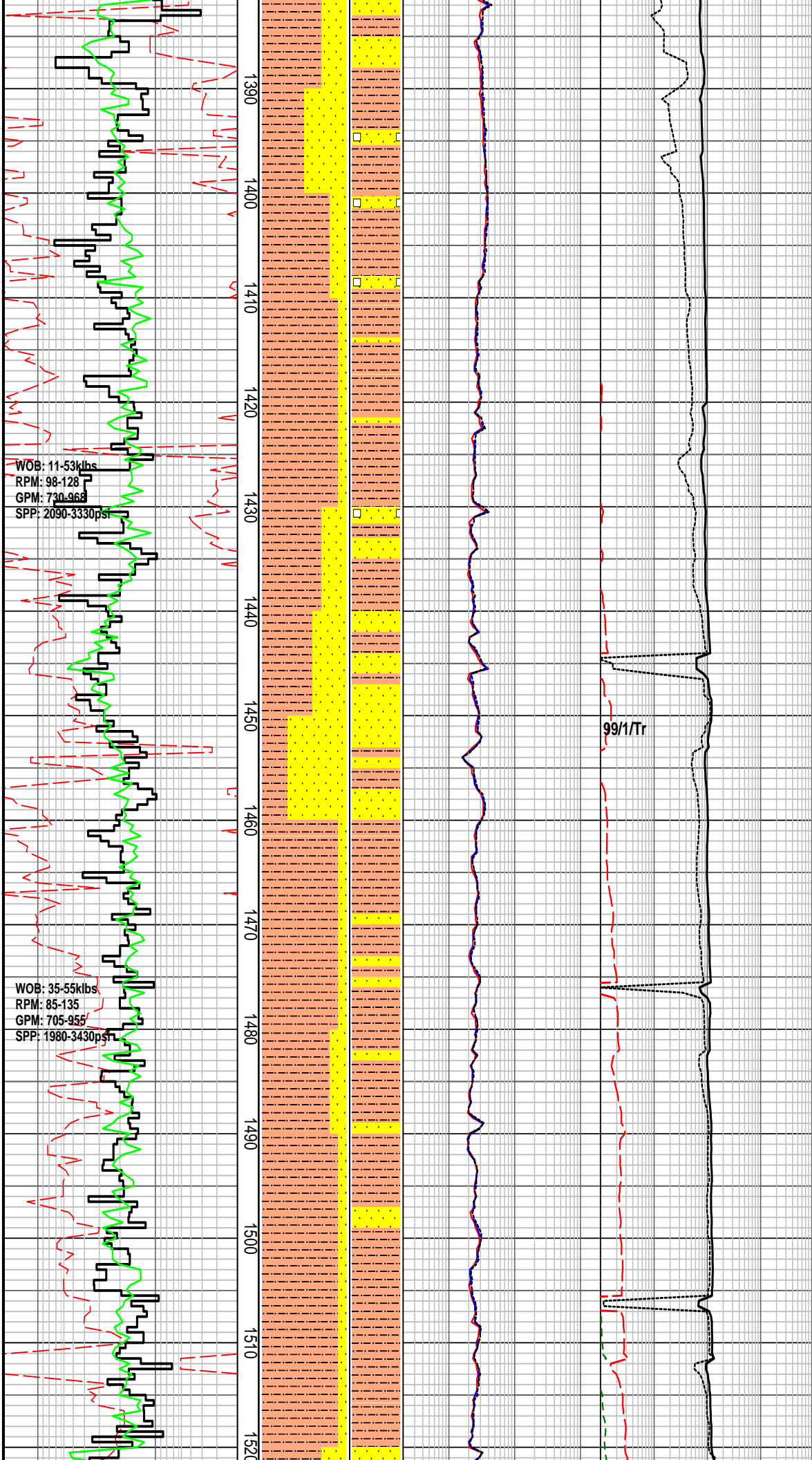
MW: 1.19 FV: 75 PV: 21 YP: 31
 GELS: 9/15/21 SOL: 5.22
 pH: 8.5 Ck: 8.5 CL: 66000

SANDSTONE: off wh, clr-trnsl, f-crs, mnr v crs, mod srt, sbang-sbrndd, wk sil cmt, mnr off wh arg mtrx, rr pyr nods, lse cln gr, mnr fri, fr inf por, p vis por, no fluor

SILTSTONE: m-brnsh gry, mnr dk brn gy, arg i/p, rr carb spks, sft frm, sbbkly-blky

SANDSTONE: lt gy, off wh, clr-trnsl, f-m gr, mod srt, sbang-sbrndd, wk calc & sil cmt, mnr lt gry-off wh arg mtrx, mnr nod pyr, tr f gr glauc, fri f gr agg, fr inf por, no fluor

Survey at 1374.02m Inc: 39.86°
 Azi:112.30° TVD: 1326.7m



SILTSTONE: m gry, arg, vf aren, mnr nod pyr, tr liths, sft-frm, disp i/p, sbblky-blky.

SANDSTONE: lt gry, clr-trnsl, vf-m gr, sbang-sbrnidd, mod srt, rr wk sil cmt, mnr lt gry arg mtrx, com nod pyr, tr f gr glauc, fri agg, pred lse, fr inf por, no fluor

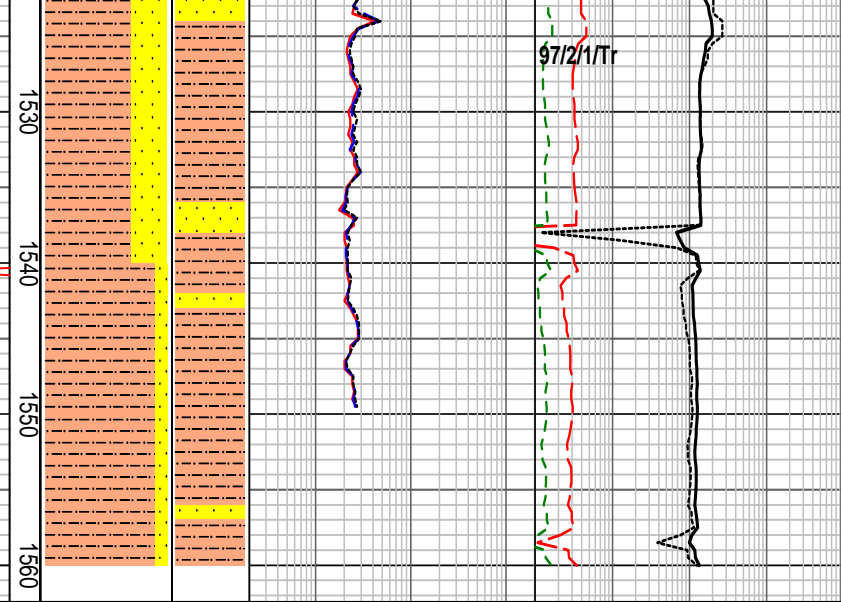
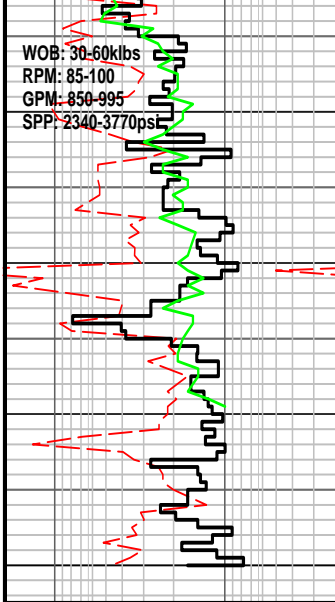
SILTSTONE: m brnsh gry, lt gry, occ dk gry, arg with clay content easily washed from samples, rr nod pyr, com glauc, frm, disp, sbblky-blky

Survey at 1460.30m Inc: 38.67°
Azi:109.79° TVD: 1393.2m

SANDSTONE: off wh-pl gry, clr trnsl, f-m, mnr crs, mod srted, dom sbang occ sbrnd, wk sil cmt, mnr off wh arg mtrx, rr glauc grs, lse, rr fri agg, fr inf por, p-fr vis por, no fluor

SILTSTONE: pl-occ m brn, mnr pl gn, com arg, occ-com glauc grs, mnr carb spks, dis-v sft, frm i/p, gen amor, occ sbblky-blky

Survey at 1519.61m Inc: 38.21°



SANDSTONE: off wh-pl gry, clr trnsl, f-m, mnr crs, mod srtd, dom sbang occ sbrnd, wk sil cmt, mnr off wh arg mtrx, rr glauc grs, lse, rr fri agg, fr inf por, p-fr vis por, no fluor

SILTSTONE: pl-occ m brn, mnr pl gn, com arg, occ-com glauc grs, mnr carb spks, dis-v sft, frm i/p, gen amor, occ sbbiky-blky

HENRY-2 FORMATION EVALUATION LOG

WOB		MD meters	LITHOLOGY %	INTERPRETED LITHOLOGY	RESISTIVITY			CHROMATOGRAPH					CALC		REMARKS
10	20				30	40	Resistivity (shallow)			Total Gas					
ROP						2	20	200	1	10	100	1000	0	100	
Gamma						ohm.m			unit						
API						Resistivity (medium)			Methane					100	0
						2	20	200	Ethane						
						ohm.m			Propane						
						Resistivity (deep)			i-Butane						
						2	20	200	n-Butane						
						ohm.m			i-Pentane						
									n-Pentane						
									100 1000 10000 100000						
									ppm						